



Globe Pond Road, Canada Water, SE16 6NQ

A beautiful and spacious semi-detached two bedroom house set in a tranquil residential area of Rotherhithe, steps from Stave Hill Ecological Park, within easy reach of ever so popular Canada Water Masterplan, and walking distance from the River Thames.

Originally a three bedroom house, the property has been reconfigured into a spacious two bedroom home with abundant storage throughout.

The ground floor features a spacious reception room, a naturally bright, contemporary kitchen with fitted appliances, a guest cloakroom, and a generous private garden, perfect for al fresco dining and entertaining. The first floor boasts a generous master bedroom complimented by a dressing area and spacious bespoke built-in wardrobe, a second double bedroom currently used as an home office with plenty of storage space, and a stylish bathroom.

Additional benefits include a fully insulated loft with scope for extension, a private drive way and additional front garden.

Freehold
Council Tax Band - D

Council tax, property size and, where applicable, lease information, service charges and ground rent are given as a guide only and should always be checked and confirmed by your Solicitor prior to exchange of contracts.

- Spacious Two Bedroom Semi-Detached House
- Recently Renovated
- Chain Free
- Drive Way and Additional Front Garden
- Fully Insulated Loft with Scope for Extension
- Modern Cleverly Designed Kitchen Equipped with Fitted Appliances
- Stylish Bathroom Plus Downstairs Guest Lavatory
- Large Private Rear Garden
- Tranquil Residential Location
- Close to Canada Water Masterplan and Steps from Stave Hill Ecological Park

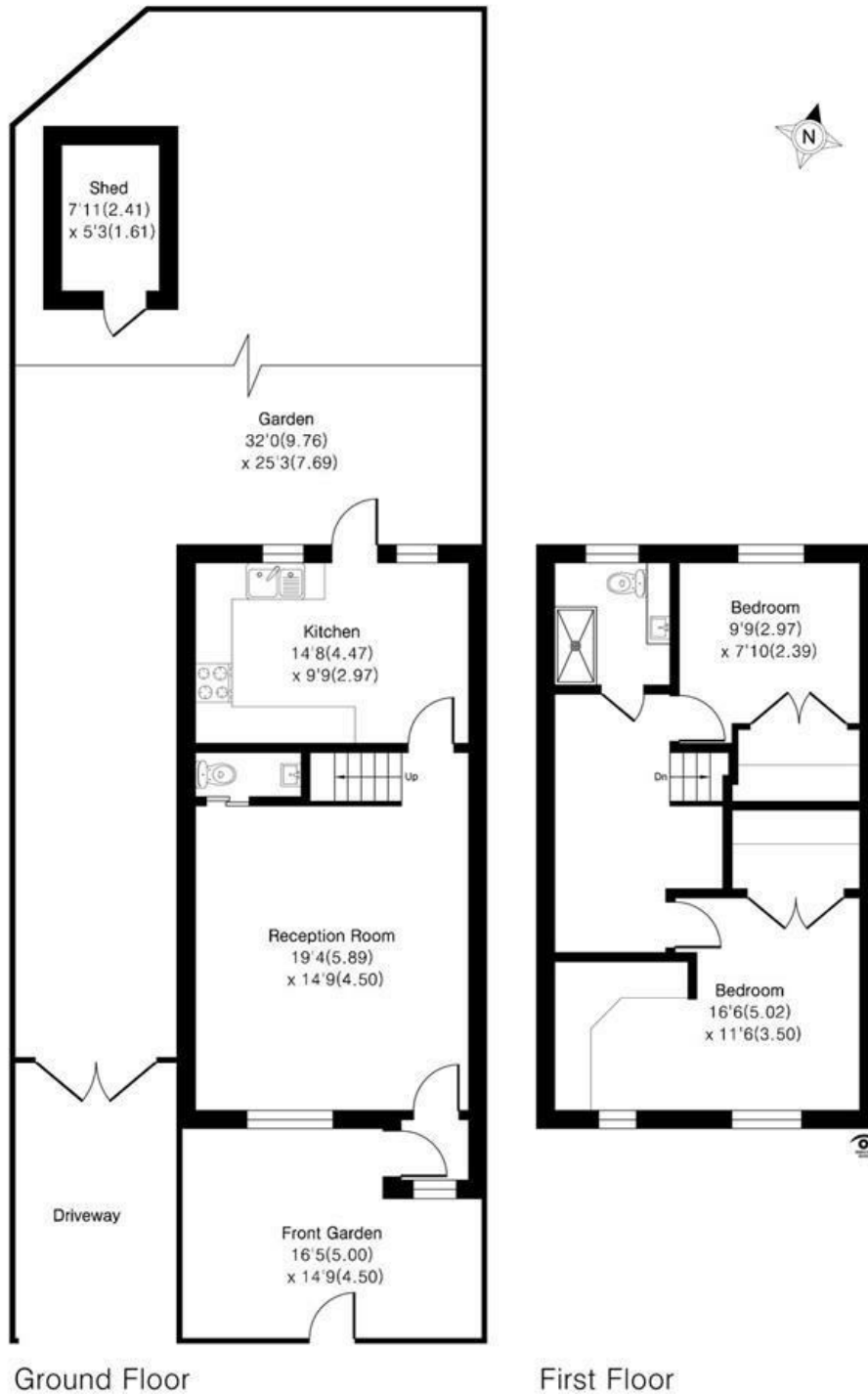
Alex & Matteo
ESTATE AGENTS

£675,000

Globe Pond Road SE16

Approximate Area = 761 sq ft / 70.6 sq m

For identification only - Not To Scale



Alex & Matteo
ESTATE AGENTS

Floor plan Produced in accordance with RICS Property Measurement 2nd Edition, Incorporating International Property Measurement Standards (IPMS2 Residential). Produced for Alex & Matteo Estate Agents.

